



Minster Road NW2

Parkheath
Sold on Service





Minster Road, NW2

Asking Price £525,000, Share of Freehold

Camden Band D

- Spacious split level 2 bedroom 2 bathroom flat
- 705 sq ft / 65.4 sq m
- Bright 15'9" reception room
- Perfect opportunity to renovate to ones taste
- 11'8" master bedroom with en-suite bathroom and fitted storage
- Separate kitchen
- Chain Free and Share of Freehold
- 9 minute walk to Kilburn station (Jubilee line)
- Excellent location, easy access to West Hampstead and Kilburn amenities
- Great local bus routes plus 10 minute walk to Brondesbury overground station

Belsize Park
208 Haverstock Hill
NW3 2AG
Sales 020 7431 1234
Lettings 020 7431 3104
nw3@parkheath.com

South Hampstead
8a Canfield Gardens
NW6 3BS
Sales 020 7625 4567
Lettings 020 7644 0800
nw6@parkheath.com

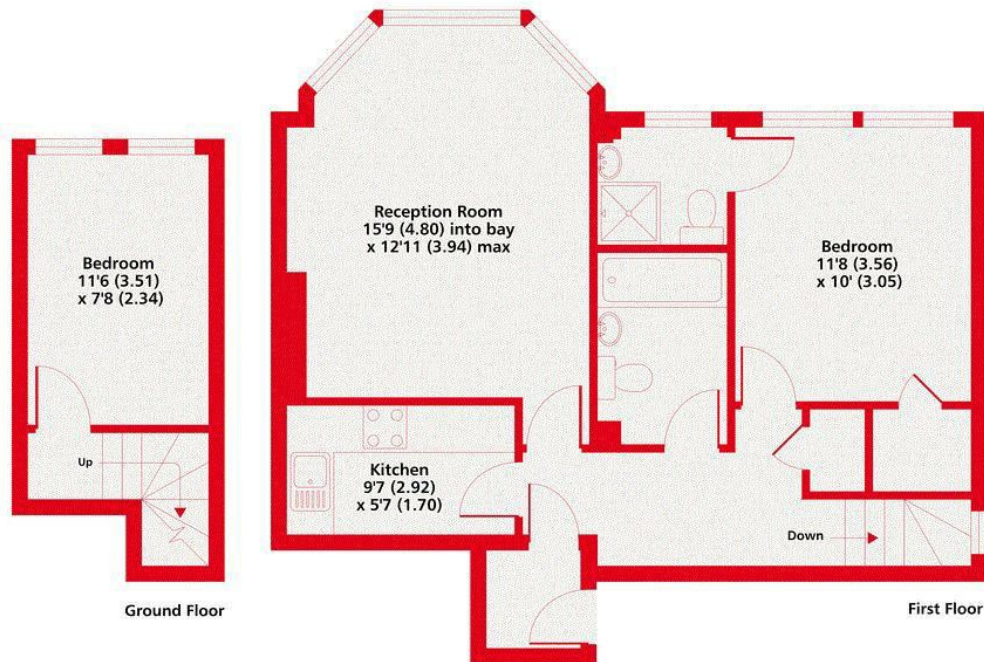
West Hampstead
192 West End Lane
NW6 1SG
Sales & Lettings
Tel 020 7794 7111
192@parkheath.com

Kentish Town
148 Kentish Town Rd
NW1 9QB
Tel 020 7485 0400
kt@parkheath.com

Kensal Rise
54-56 Chamberlayne Rd
NW10 3JH
Tel 020 8960 4845
kensal@parkheath.com

Property Management
192 West End Lane
NW6 1SG
020 7433 6174
pm@parkheath.com

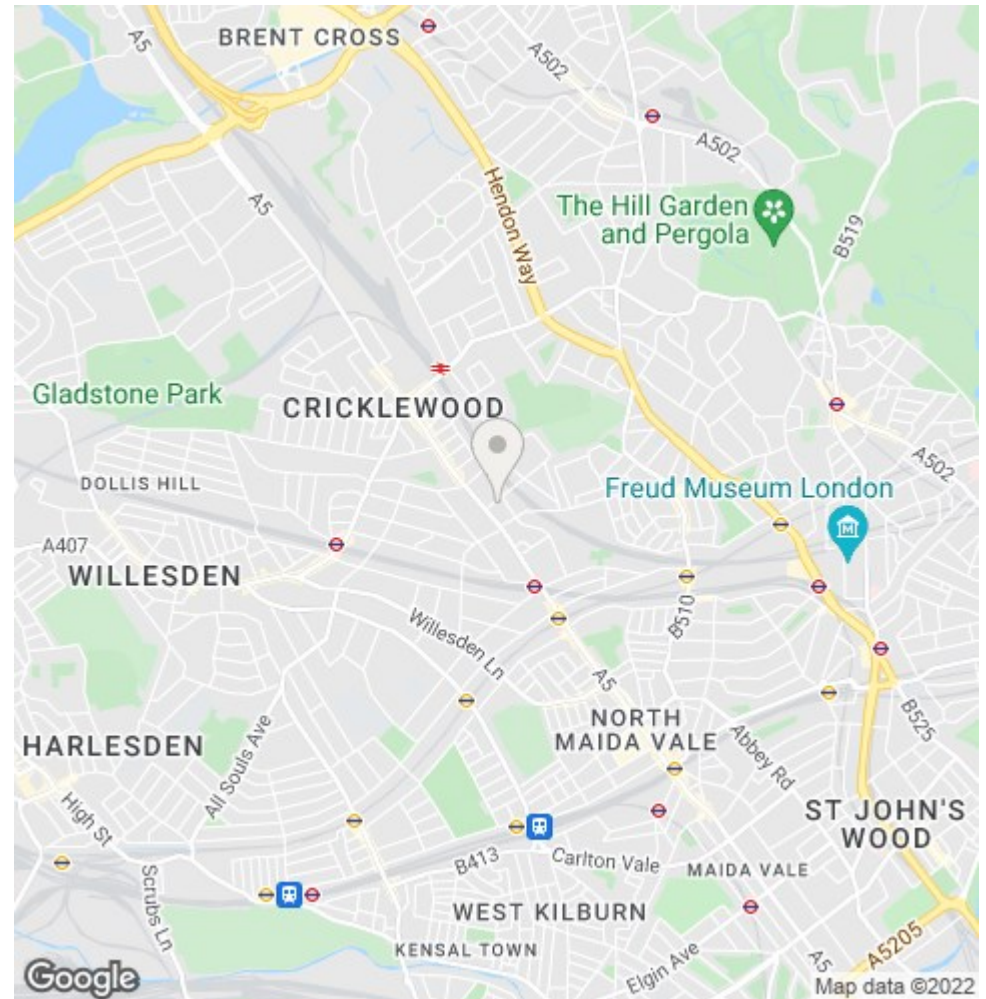
Parkheath
Sold on Service



Minster Road, NW2
 Approximate Area = 705 sq ft / 65.4 sq m
 For identification only - Not to scale



Floor plan produced in accordance with RICS Property Measurement Standards incorporating International Property Measurement Standards (IPMS2 Residential). © nchecon 2021. REF: 786544



The particulars do not constitute part of an offer or contract. The particulars, including text, photographs and plans, are for the guidance only of prospective purchasers/tenants and must not be relied upon as statements of fact. The descriptions provided therein represent the opinion of the author and whilst given in good faith should not be construed as statements of fact. Nothing in these particulars shall be deemed a statement that the property is in good condition or otherwise or that any services or facilities are in good working order. All measurements are approximate